

## AVeL-MobiCAD

Enhance the performance of your dispatchers and empower your crews with a mobile dispatch unit which incorporates text messaging, real time AVL and status/post updating. AVeL-MobiCAD runs on a mobile computer in the vehicle and allows first responders to send and receive vital dispatch and incident information, update incident status, add remarks to the incident record, send electronic messaging and initiate a response to an incident. AVeL-MobiCAD is the mobile extension of AVeL-CAD, however it can be also used as a stand-alone system or be integrated with third party systems.

### Highlights

Here is what it means for you:

- **Real-time incident details** - field officers receive all incident details from dispatchers or from other field officers
- **Real-time mapping and navigation** - easy-to-follow visuals help accentuate locations for quicker and more accurate responses
- **Map display** - other vehicles can be displayed on the map in real time using snapshots (e.g.: you want to see other vehicles in your fleet responding to the current incident or your supervisor wants to display the vehicles on-duty); field personnel have full control over map panning and zooming
- **Queries** - users can make national, federal, state/provincial or local queries directly from their vehicles
- **Silent dispatch** - eliminates voice radio traffic to dispatch vehicles; eliminates misunderstood voice communication
- **Silent status** - crew in vehicle updates status with the push of a button; no voice traffic
- **Text messaging** - transmit sensitive information or other communications to/from vehicles with text messaging; eliminates misunderstood voice communication
- **Platform** - system developed using Microsoft .NET technology

### Benefits:

- Provides field officers with the most up-to-date information while en route or arriving at the scene of an incident
- Increases field officers safety as dispatchers know their location at all times
- Eliminates dispatcher's need to voice-dispatch vehicles; by taking advantage of the mapping function, dispatchers can visually locate vehicles and re-deploy to higher priority incidents thus providing a reduced response time
- Provides messaging functions for coordinated communications with the dispatch center
- Queries can be performed directly by the field officer without dispatch center intervention
- Industry standard system architecture to advance your system's efficiency and expansion

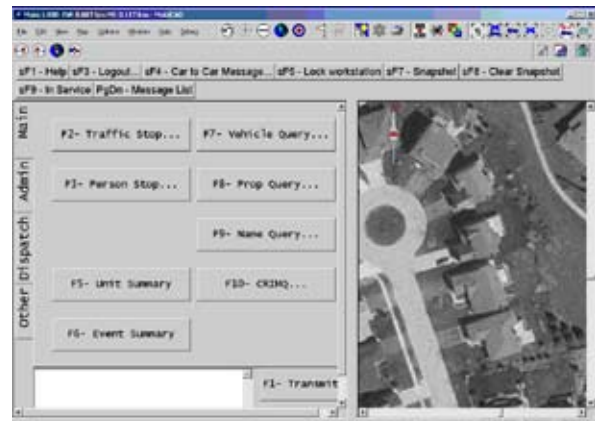


Figure 1: MobiCAD main screen



Figure 2: MobiCAD mapping